

Making it Digital

MAKE YOUR IMAGES DIGITAL USING A SCANNER OR A DIGITAL CAMERA



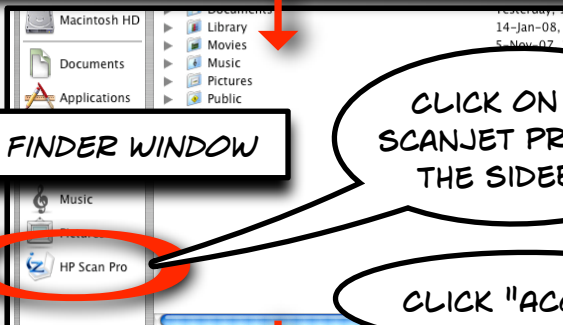
SCANNER: PLACE DRAWINGS FACE UP IN THE AUTO-DOCUMENT FEEDER. USE THE eMAC THAT IS CONNECTED TO THE HP SCANNER...



DIGITAL CAMERA: TAKE PICTURES OF THE DRAWINGS...

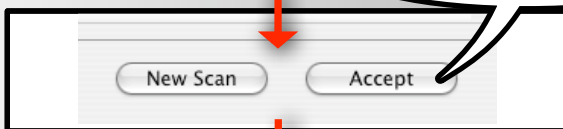
ATTACH THE DIGITAL CAMERA TO THE COMPUTER WITH A USB CABLE

OPEN A FINDER WINDOW



CLICK ON "HP SCANJET PRO" IN THE SIDEBAR

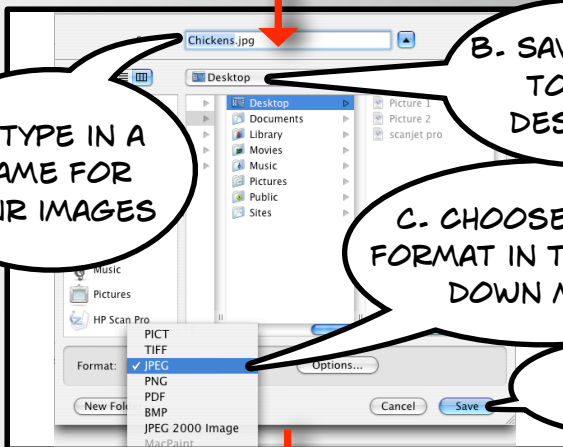
CLICK "ACCEPT"



New Scan

Accept

A. TYPE IN A NAME FOR YOUR IMAGES



B. SAVE FILES TO THE DESKTOP

C. CHOOSE "JPEG" FORMAT IN THE DROP-DOWN MENU

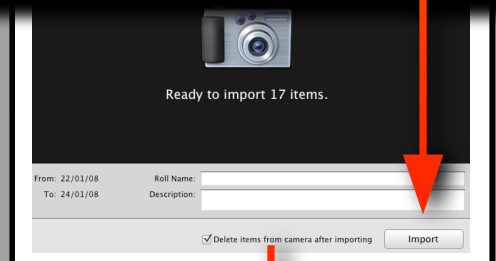
D. CLICK "SAVE"

LAUNCH iPHOTO. DRAG AND DROP THE FILES INTO iPHOTO. QUIT iPHOTO

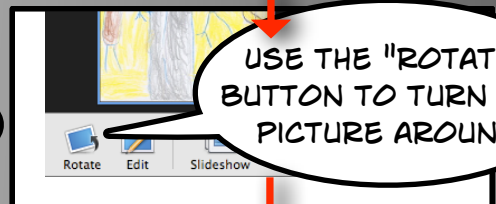
LAUNCH iPHOTO



TURN ON THE CAMERA AND SET IT TO "PLAY" MODE. CLICK "IMPORT"



USE THE "ROTATE" BUTTON TO TURN THE PICTURE AROUND



QUIT iPHOTO